

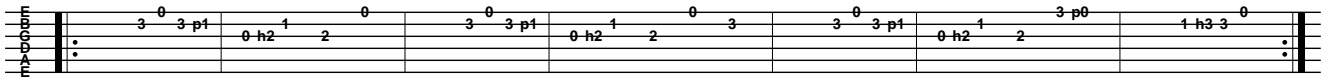
Let her go

Passenger

Capo VII

Una canzone molto melodica abbastanza facile da apprendere, ma che rivela anche qualche passaggio complesso.

Introduzione



Ritmo per il ritornello



Ritmo per le strofe



Per la prima strofa si fa solo la prima nota di ogni battuta.

Testo

[RITORNELLO]

Well you only need the light when it's burning low / Only miss the sun when it starts to snow
Only know you love her when you let her go
Only know you've been high when you're feeling low / Only hate the road when you're missin' home
Only know you love her when you've let her go
And you let her go

[STRUMENTALE]

Am F G Em
Am F G

[STROFA 1]

Staring at the bottom of your glass
Hoping one day you will make a dream last
The dreams come slow and goes so fast
You see her when you close your eyes
Maybe one day you will understand why
Everything you touch surely dies

[RITORNELLO]

Well you only need the light when it's burning low / Only miss the sun when it starts to snow
Only know you love her when you let her go
Only know you've been high when you're feeling low / Only hate the road when you're missin' home
Only know you love her when you've let her go

[STROFA 2]

Am F
 Staring at the ceiling in the dark
 G Em
 Same old empty feeling in your heart
 Am F G
 Love comes slow and it goes so fast
 Am F
 Well you see her when you fall asleep
 G Em
 But to never to touch and never to keep
 Am
 Because you loved her to much
 F G
 And you dive too deep

[RITORNELLO]

F C G Am
 Well you only need the light when it's burning low / Only miss the sun when it starts to snow
 F C G
 Only know you love her when you let her go
 F C G Am
 Only know you've been high when you're feeling low / Only hate the road when you're missin' home
 F C
 Only know you love her when you've let her go

[PONTE]

Am
 And you let her go
 F G
 Ooooo ooooo ooooo
 Am
 And you let her go
 F G
 Oooooo ooooo ooooo
 Am F G Em
 And you let her go

[INTERMEZZO]

Am F G

[RITORNELLO]

F C G Am
 Well you only need the light when it's burning low / Only miss the sun when it starts to snow
 F C G
 Only know you love her when you let her go
 F C G Am
 Only know you've been high when you're feeling low / Only hate the road when you're missin' home
 F C
 Only know you love her when you've let her go
 G
 And you let her go

[FINALE]

F C G Am
 Well you only need the light when it's burning low / Only miss the sun when it starts to snow
 F C G
 Only know you love her when you let her go
 F C G Am
 Only know you've been high when you're feeling low / Only hate the road when you're missin' home
 F C
 Only know you love her when you've let her go
 G Am
 And you let her go